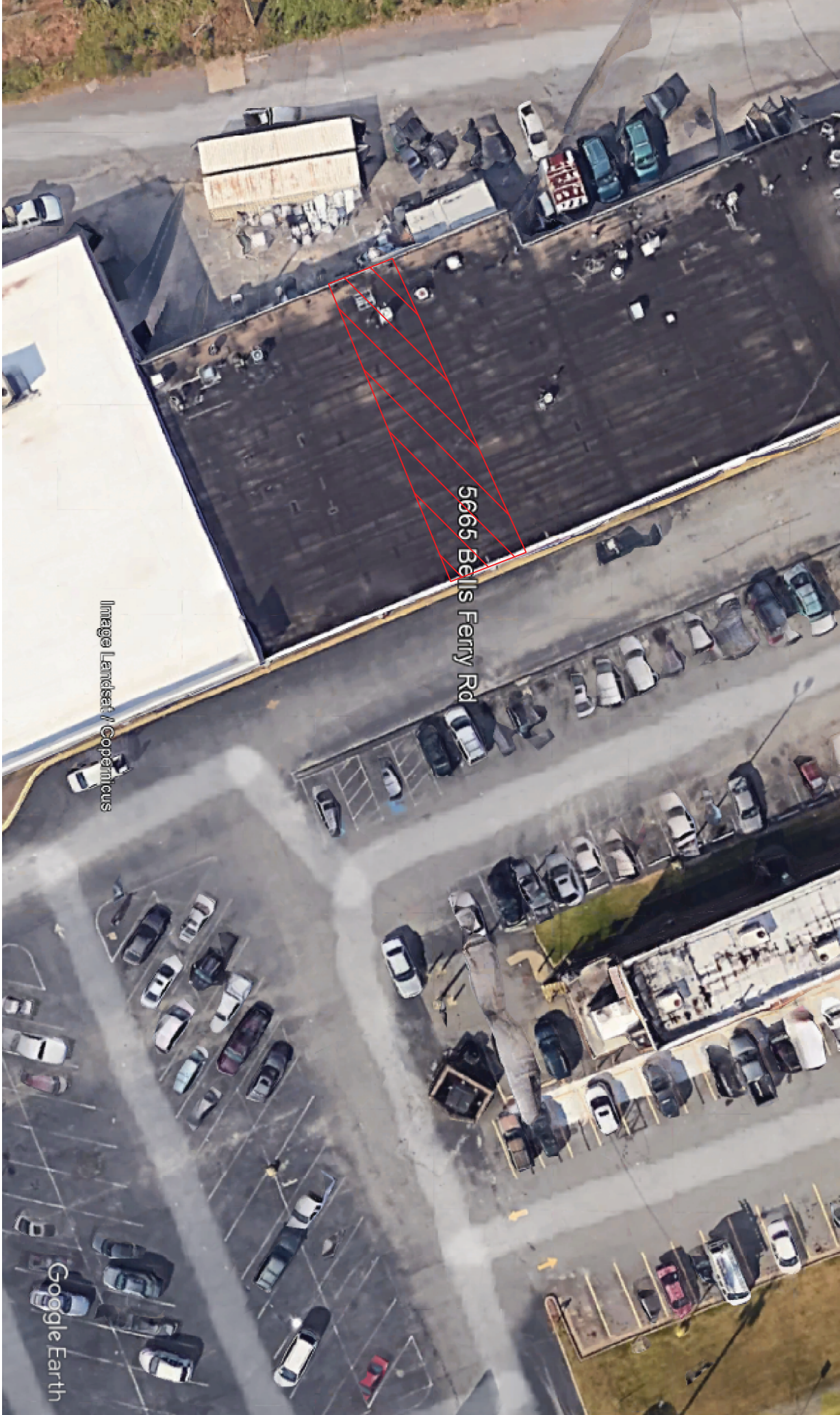


APPLICABLE BUILDING  
CODES AND COMMENTS

PROJECT DATA:  
CHEROKEE COUNTY

- INTERNATIONAL BUILDING CODE - 2018 EDITION W/GA. 2020, 2024,2025 AMENDMENTS
  - INTERNATIONAL RESIDENTIAL CODE - 2018 EDITION W/GA. 2020,2024 AMENDMENTS
  - INTERNATIONAL PLUMBING CODE, 2018 EDITION W/GA. 2020, 2022, 2023,2024 AMENDMENTS
  - INTERNATIONAL MECHANICAL CODE, 2018 EDITION W/GA. 2020, 2024 AMENDMENTS
  - NATIONAL ELECTRICAL CODE, 2023 EDITION, NO AMENDMENTS
  - INTERNATIONAL FUEL GAS CODE, 2018 EDITION W/GA. 2020, 2022 AMENDMENTS
  - INTERNATIONAL FIRE CODE, 2018 EDITION W/GA. 2020,2022 AMENDMENTS
  - INTERNATIONAL 101 LIFE SAFETY CODE, 2018 EDITION W/GA. 2020,2022 AMENDMENTS
  - INTERNATIONAL ENERGY CONSERVATION CODE 2015 W/GA. 2020,2022, 2023 AMENDMENTS
- GEORGIA ACCESSIBILITY CODES CHAPTER 120-3-.20 (.01-.08) WITH 2020  
GEORGIA STATE FIRE COMMISSIONER AMENDMENTS 120-3-3-.08 THROUGH  
.11-2010 ADA STANDARDS FOR ACCESSIBLE DESIGN.



"Signs are not approved within the scope of this building permit. A separate sign location permit is required for each sign"

Clean indoor air ordinance rules of the Department of Human Resources  
Public Section 290-5-61-.05 (for Georgia Smokefree Air Act of 2005) and  
O.C.G.A. Section 31-12a-8

"A sign clearly stating that smoking is prohibited shall be conspicuously posted by the building owner, agent,operator, person in charge or proprietor at each entrance or in a position clearly visible upon entry into the building in accordance with Georgia Smokefree Air Act of 2005. Acceptable signs shall display either "no smoking" or the international "no smoking "symbol (consisting of a pictorial representation of a burning cigarette enclosed in a red circle with a red bar across it)."

# QUICK STOP FOOD MART

## 5665 BELLS FERRY RD. ACWORTH GA. 30102

### SCOPE OF WORK

1. EXISTING USE: REPAIR STORE
2. PROPOSED USE: FOOD MART

### GENERAL NOTES

TOTAL Sq. Ft. 1,397 SF.

CONSTRUCTION TYPE : II-B

EXTERIOR WALL TYPE: BLOCK

SPRINKLE SYSTEM : NO

BUILDING HEIGHT : 19'

#### OCCUPANCY CLASSIFICATION

NFPA 101: OCCUPANCY : ("MERCANTILE")  
STANDARD BUILDING : TYPE IIB UNPROTECTED

#### FIRE PROTECTION RATING

FLOOR: NON-COMBUSTIBLE (TILE ON CONCRETE)  
BEAMS: WOOD  
COLUMNS: METAL  
ROOF: METAL

#### OCCUPANCY DATA

DESIGN OCCUPANT DATA		
ROOM / AREA	SQ. FT.	OCCUPANT LOAD FACTOR
RETAIL AREA	1,000 S.F.	1.30 FT.
CASHIER AREA	112 S.F.	1.100 FT.
REST ROOM	45 S.F.	N/A PERSON CAPACITY
KITCHEN	30 S.F.	1 PERSON CAPACITY
BACK ROOM	160 S.F.	1 PERSON CAPACITY
1,397.00 TOTAL CAPACITY		= 33 PERSON CAPACITY

#### EGRESS

MAXIMUM LENGTH OF COMMON PATH OF TRAVEL = 60 FEET  
MAXIMUM LENGTH OF EXIT EGRESS = 60 FEET

EXIT REQUIRED = 2

NUMBER OF STORES  
& BUILDING HEIGHT

(ONE STORY) BUILDING TOP OF BUILDING 19'-0"

#### SCOPE OF WORK

#### USES:

EXISTING USE: (STORE)  
PROPOSED USE: (STORE)

No.	
A-1	COVER SHEET & INDEX, GENERAL NOTES
A-2	EXISTING & PROPOSED LIFE SAFETY FLOOR PLAN

### RELEASE FOR CONSTRUCTION

Designed by	Date	Scale
JOHN E. SWINEY	03/05/2025	1/4"= 1'-0"

#### COVER SHEET

Location: QUICK STOP FOOD MART  
5665 BELLS FERRY RD.  
ACWORTH GA. 30102

Sheet  
**A-1**

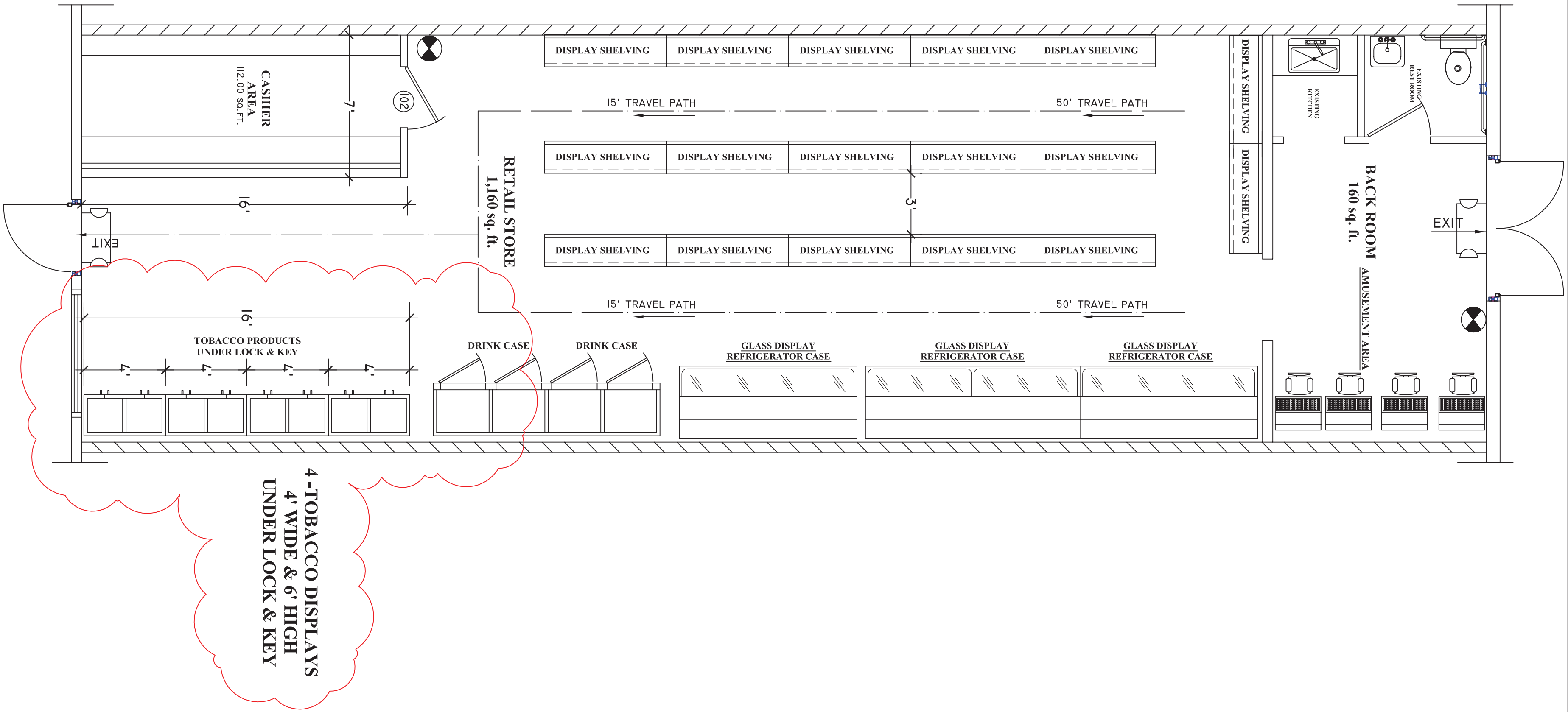
### J.S. CADD DESIGN SERVICE

1426 GOLF LINK DR.  
STONE MOUNTAIN GA. 30088  
Ph. (404) 502-8574  
E-mail swineyj@bellsouth.net



56665 BELLS FERRY RD  
ACWORTH GA. 30102



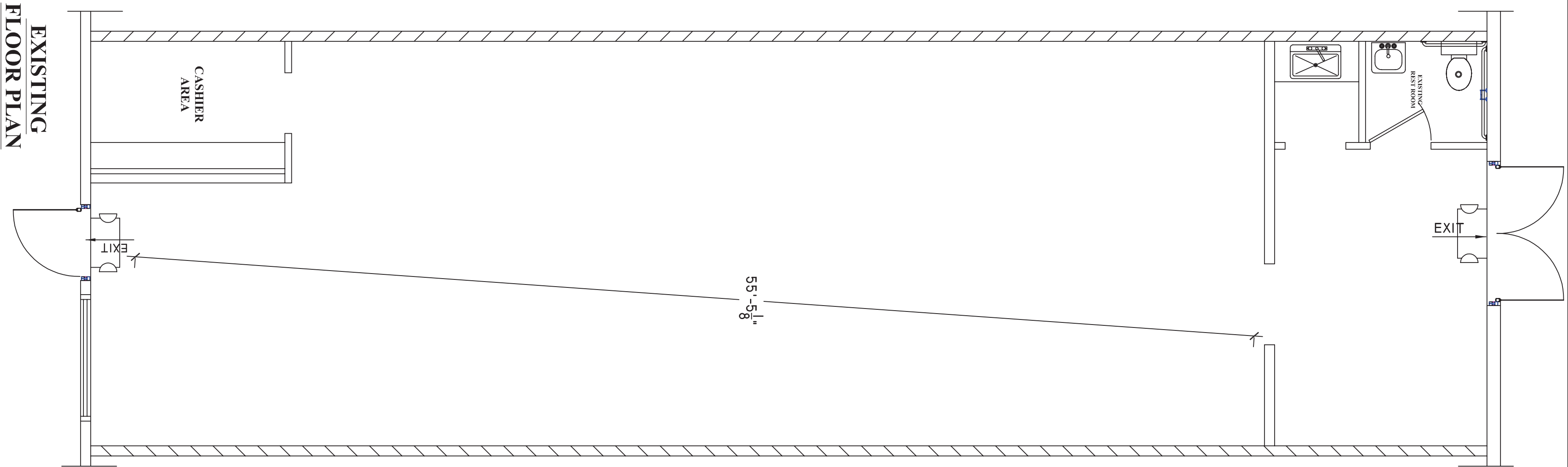


GENERAL NOTES

- EXISTING CONSTRUCTION IS TYPE II-B UNPROTECTED CONSTRUCTION.  
EXISTING EXIT DOORS EQUIPPED WITH PANIC BAR PER CODE.  
INTERIOR FINISH IS CLASS A, B, AND C.  
EXISTING EMERGENCY LIGHTING/SIGNAGE IS AS NOTED ON AS-BUILT DRAWINGS.  
EXISTING INTERIOR WALLS IS 1/2 GYPSUM BOTH SIDES OF 2" X 4" WOOD STUDS @ 16" O.C. WITH TOP AND BOTTOM WOOD PLATES.  
CONSTRUCTION SHALL CONFORM TO ALL APPLICABLE LOCAL, STATE, AND INTERNATIONAL CODES AND ORDINANCES.  
ALL INTERIOR DOORS SHALL BE 3'-0" X 7'-0" X 1 3/4"  
REQUIRED BY WALL RATING.  
ALL INTERIOR DOORS SHALL HAVE LEVER TYPE HARDWARE.  
PROVIDE 2 FIRE EXTINGUISHERS AS SHOWN

LEGEND

- (F) FIRE EXTINGUISHER  
10LB- CLASS ABC UL  
RATING 1A: 20BC
- (E) EXIT LIGHTS W/ BATTERY  
BACK-UP
- (100) EXISTING EXIT DOORS



RELEASE FOR CONSTRUCTION

Designed by	Date	Scale
JOHN E. SWINEY	03/05/2025	1/4" = 1'-0"

J.S. CADDD DESIGN SERVICE

1426 GOLF LINK DR.  
STONEMOUNTAIN GA. 30088  
Ph. (404) 502-8574  
E-mail swineyj@bellsouth.net

Location: QUICK STOP FOOD MART  
5665 BELLS FERRY RD.  
ACWORTH GA. 30102

Sheet

A-2

